

# HOW TO USE AN EYEWASH INFOGRAPHIC

SAVE YOUR EYESIGHT WITH PROPER EYEWASH STATION USE



If a chemical splashes in your eyes, will you know what to do?



**10 - 15 SECONDS**

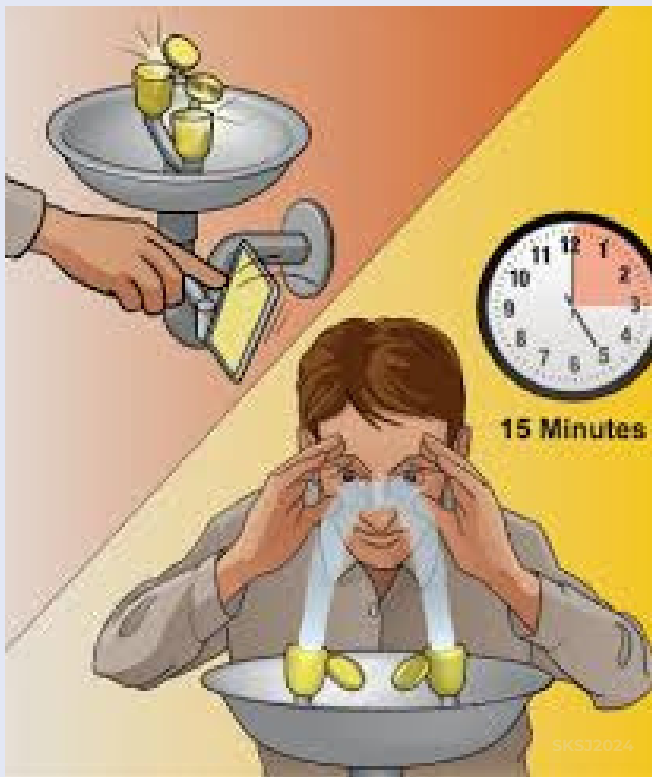
## Do not panic.

Go immediately to the closest eyewash station.

If possible, yell for help so that another employee can help you walk safely and quickly to the eyewash station. The first 10 to 15 seconds after exposure are critical.

Activate the eyewash station

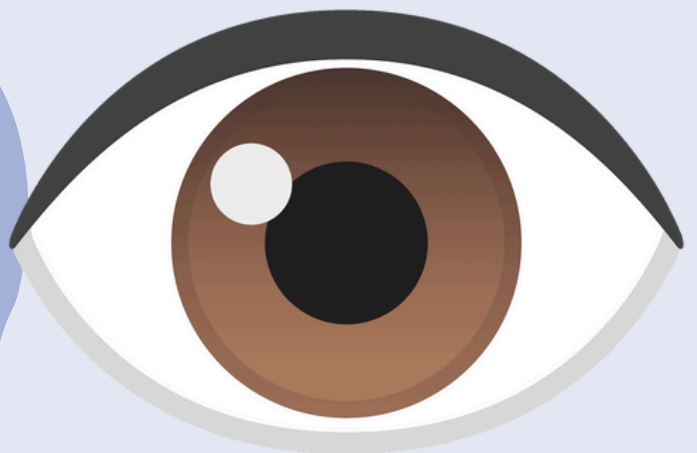
Open the cap and put the nozzle into the eye. Wash eyes for at least 15 minutes.



Flush your eyes continuously for a full 15 minutes while keeping your eyes open with your fingers.

Roll your eyes in all directions to flush every area of the eye.

If you wear contact lenses, begin flushing over the lens immediately. Do NOT delay flushing to remove your lenses. Remove the lenses once flushing has begun so the chemical is not trapped in your eyes.



After flushing, seek immediate medical attention

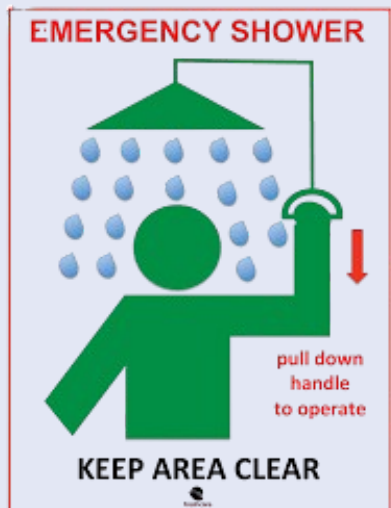
Notify PIC or lab supervisor of the accident/incident/injury

# HOW TO USE AN EMERGENCY SHOWER INFOGRAPHIC

PROTECT YOURSELF  
PROPERLY USING EMERGENCY  
SHOWER STATION USE



Immediately use an emergency shower if your skin is exposed to a biological, chemical, or hazardous agent.



## Do not panic.

Shout out for help to allow co-workers to assist you.

Get to the shower and pull the shower handle.

Remove contaminated clothing, shoes, and jewellery.

Flush skin or affected area for at least 15 minutes. Use an uncontaminated clothing or fire blanket to shield the affected individual to provide privacy and to offer body coverage.

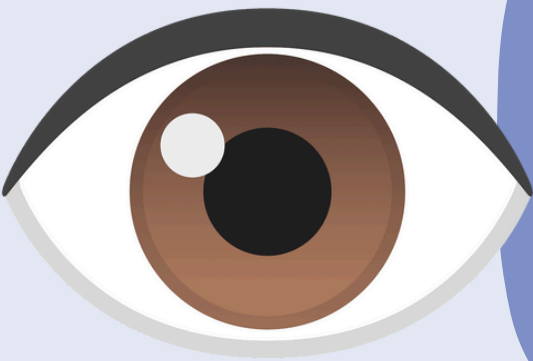
Discard any clothing that may be contaminated as hazardous waste.

# 15 MINUTES

Protect the eyes from the stream of water, the rate of discharge is enough to cause damage, and avoid inadvertent contamination.

If the biological or chemical agent gets in your eyes, remove contact lenses if you wear them and use an eyewash station.

Ideally a combination safety shower and eyewash unit should be used in situations where both the skin and eyes have been contaminated.



Refer to safety data sheet for any further first aid requirements for the hazardous material involved.

Contain water flow from showers with absorbent material to prevent the spread of contamination



Seek medical attention after flushing the areas of contact.

Notify PIC or lab supervisor of the accident/incident/injury

